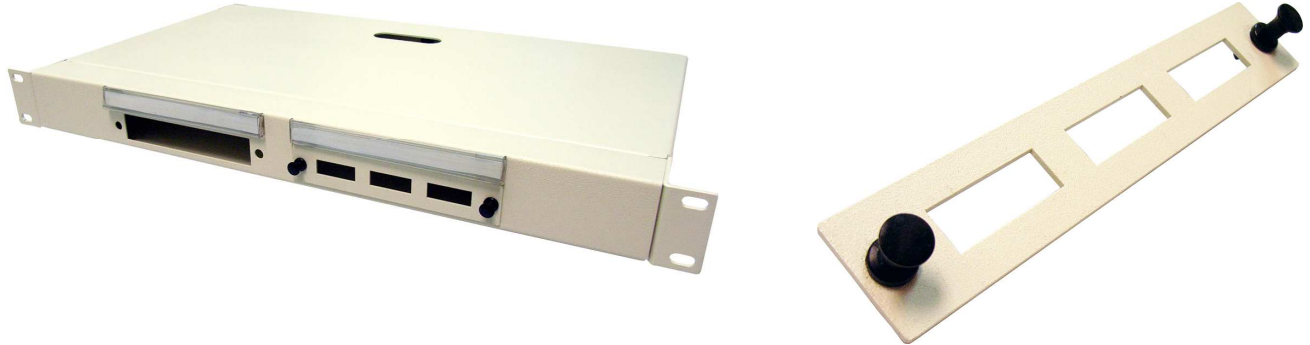


19" RACK MOUNT FIBER OPTIC DISTRIBUTION BOX - Unloaded



DESCRIPTION

Available in 1U and 2U configurations will provide medium density up to 24 Port SC or ST coupler. Can be mounted on 19" EIA Racks. Designed for indoor and outdoor use in dry environment.

APPLICATION

Use in back bone cabling, building back bone cabling or horizontal cabling systems as interconnection or cross connection between campus.

Dimensions

Width	19"
Height	1U or 2U
Depth	270mm or 540mm

Part No.	Description
FD-RM-12	12 Port 19" Rack Mount Fiber Optic Distribution Box - Unloaded
FD-RM-24	24 Port 19" Rack Mount Fiber Optic Distribution Box - Unloaded